



\$ 795,000



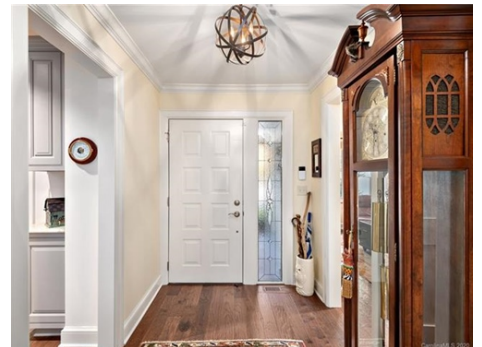
410 Crowfields Drive, Asheville, NC 28803

- » Beds: 3 | Baths: 3 Full, 1 Half
- » MLS #: 3680933
- » Condominium | 3,824 ft²
- » More Info: 410CrowfieldsDrive.com



Jo Chandler
(828) 231-5444 (cell)
jochandler@preferredprop.com
<http://www.PreferredProp.com>

Preferred Properties
Preferred Properties Of Asheville
1270 Hendersonville Road #3
Asheville, NC 28803
(828) 210-9400



Ask the locals what the next move is when you're over 55 and ready to simplify, and they're bound to mention Crowfields. Here's an opportunity for an ideal homebase to enjoy the best of lifestyle and location without compromising space! Not a mere renovation; it's a new home from the rafters & joists, and finished w/some of the finest materials and treatments in the market. All new plumbing, wiring, insulation, windows, doors and systems. Custom millwork and exceptional finishes on 3 floors of inviting rooms and spaces overlooking the lake. Elevator potential. Please ask agent for complete list of features. You simply will not find this level of quality and design for only \$207/sqft anywhere else in a desirable South Asheville location.

